

**NATIONAL ASSESSMENT AND
ACCREDITATION COUNCIL
PRESENTATION IN AIU'S NORTHERN
REGION VICE CHANCELLOR MEET
NOVEMBER 22**



**Dr. (Mrs.) Pratibha Singh
Deputy Adviser, NAAC**

NAAC Vision

- To make quality the defining element of higher education in India through a combination of **self and external** quality evaluation, promotion and sustenance initiatives



NAAC Mission

- To arrange for **periodic assessment** and accreditation of institutions of higher education or units thereof, or specific academic programmes or projects;
- To stimulate the **academic environment** for promotion of quality of teaching-learning and research in higher education institutions;
- To encourage **self-evaluation, accountability autonomy and innovations** in higher education;
- To undertake quality-related **research studies, consultancy and training programmes**, and
- To **collaborate** with other stakeholders of higher education for quality evaluation, promotion and sustenance



GOVERNANCE

- The NAAC functions through **its General Council (GC) and Executive Committee (EC)** where educational administrators, policy-makers and senior academicians from a cross-section of the system of higher education are represented.
- The **Chairperson of the UGC** is the President of the GC of the NAAC; the Chairperson of the EC is an eminent academician in the area of relevance to the NAAC.
- The **Director** of the NAAC is its academic and administrative head, and is the member-secretary of both the GC and EC.
- The NAAC also has many **advisory and consultative committees** to guide its practices, in addition to the **statutory bodies** that steer its policies.
- The NAAC has a core staff and consultants to support its activities. It also receives assistance from across the country from a large number of **external resource persons** who are not full-time staff of the NAAC.



FUNCTIONS OF NAAC

- Evolving appropriate **instruments** for Assessment and Accreditation
- **Fine-tuning** of Assessment and Accreditation instrument whenever necessary
- **Provide guidance** to institutions for preparing their Self-study Reports (SSRs)
- **Coordinating the 'on-site'** visit to its HEIS for effective completion
- Develop **pre- and post-accreditation** strategies
- Identifying, enlisting and creating a **pool of efficient assessors**
- Providing appropriate **training to assessors**



FUNCTIONS OF NAAC

- Disseminate the NAAC processes and quality enhancement mechanisms through relevant **publications**
- Organize **Seminars/ Workshops/ Conferences** to share and discuss issues related to quality in higher education
- **Partner with stakeholders** for promoting Assessment and Accreditation
- Promote the **establishment of Quality Assurance units** or Internal Quality Assurance Cell (IQAC)(at Institutional level) or State Quality Assurance Cell (SQAC)(at the State level)
- Establish **collaborations** with other National and International professional Agencies involved in Assessment and Accreditation.



ASSESSMENT FRAMEWORK UNDER RAF(FROM 2017)

- **Criterion, Key Indicator, Metrics**
- **Data Driven**
- **Quantitative (about 67%) and Qualitative peer judgment (about 33%)**
- **Validated by third party and peers**
- **Completely automated**
- **Communication is system driven**
- **Follow fixed timeline**
- **Online survey of students and designated user portals**



Changes Introduced RAF

Sl.N o	Earlier System before 2017	RAF w. e. f July 2017
01	Application: LOI +IEQA	Application : LOI +IEQA = IIQA(Initially launched in window later continuous)
02	Framework:7 Criteria, 32 Key Aspects, More than 300 Questions	Framework:7 Criteria, 32 Key Indicators, Metrics: 55 (Affiliated College)
03	Questions(300): Pattern of Answer(text)	Questions(55): Pattern of Answer{text(Q _{LM})+ data(Q _{NM})}
04	Additional step IEQA : Pre-qualifying	Additional step removed :25% of Q _{NM} as pre qualifier



Changes Introduced RAF

06	No Third Party Data Validation and Verification (DVV)	Third party data validation and verification (DVV)
07	Student feedback taken at institution level	On line Student Satisfaction Survey (S 3) from NAAC
08	Submission of SSR as hard copies	On-line submission of SSR (No hard copies)



CHANGES INTRODUCED RAF

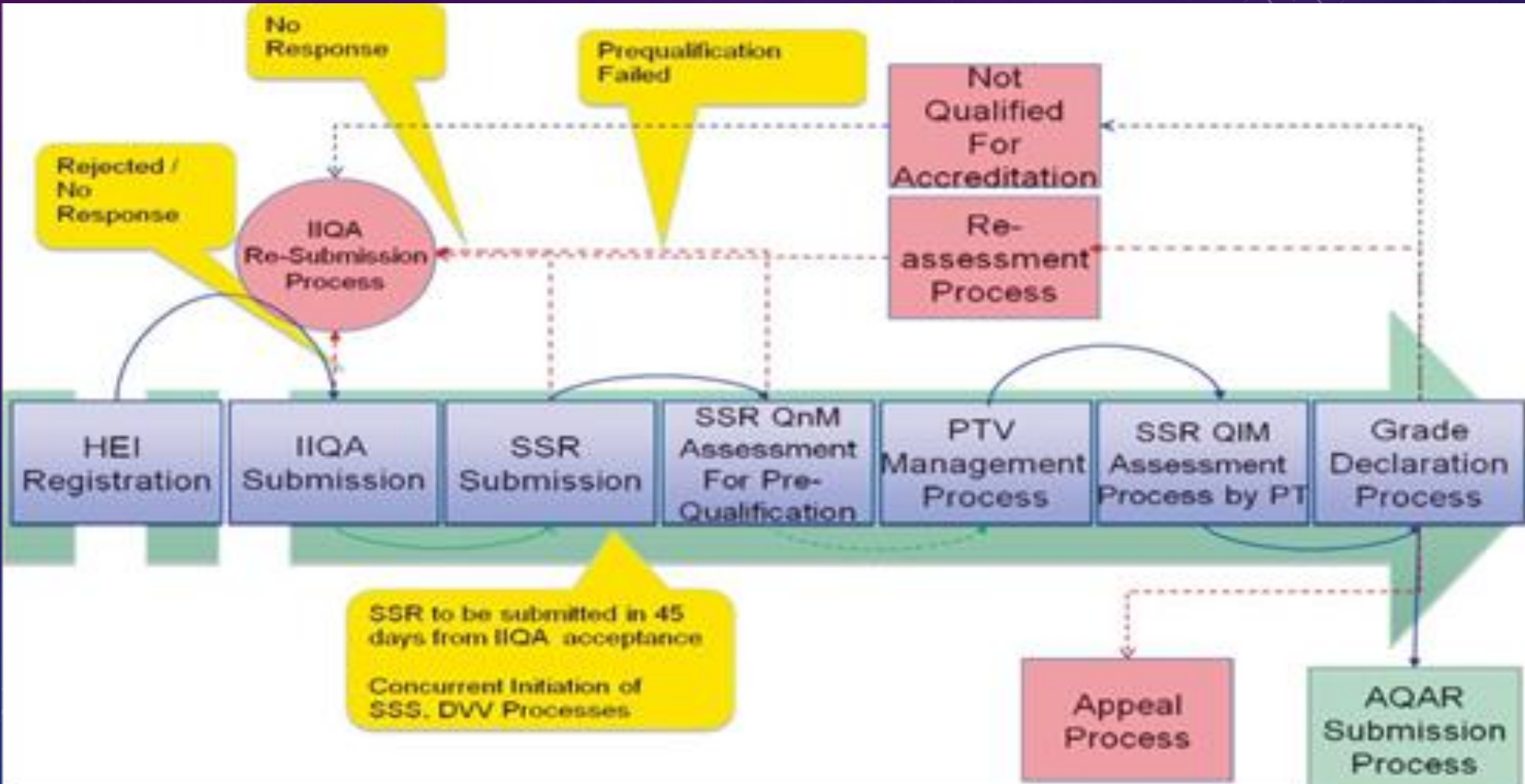
10	Evaluation Pattern : Manual	Evaluation Pattern : System generated(Benchmark driven)
11	Selection of Peers (manual)	System enabled selection of PTV Members
12	Peer Team Report – Criterion and Key Aspect - wise	Peer Team Report (PTR) restricted upto Criteria – wise (emphasis on QLM)

Changes Introduced RAF

14	On site Visit Schedule (2-5 days) Team size 3+1 for colleges For Universities 6-16	Visit Schedule (3 days for Universities and 2 days for Colleges) No. of persons strictly 3 for Colleges 5 for Universities maximum
15	Fully depend on Peer review	70 % + 30% = Accreditation Outcome QLM + QNM, + S3 + DVV, Graphical Representation
16	Fee structure	Reduced Fee structure

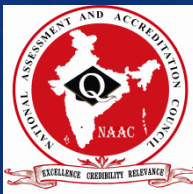


Process of Assessment and Accreditation



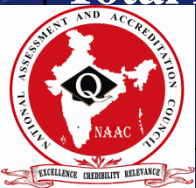
QIF Framework

1. CURRICULAR ASPECTS
2. TEACHING-LEARNING AND EVALUATION
3. RESEARCH, INNOVATIONS AND EXTENSION
4. INFRASTRUCTURE AND LEARNING RESOURCES
5. STUDENT SUPPORT AND PROGRESSION
6. GOVERNANCE, LEADERSHIP AND MANAGEMENT
7. INSTITUTIONAL VALUES AND BEST PRACTICES



Quality Indicator FRAMEWORK (QIF)

Type of HEIs	Universities	Autonomous Colleges	Affiliated/Constituent Colleges
			UG & PG
Criteria	7	7	7
Key Indicators (KIs)	34	34	32
Qualitative Metrics (Q ₁ M)	36	35	21
Quantitative Metrics (Q _n M)	79	72	34
Total Metrics (Q₁M + Q_nM)	115	107	55



Types of Metrics

- **First kind:** Quantitative metrics which seeks year wise data for **last five years i.e. 2 stage percentage/ratio calculation.**
- **Second kind:** Quantitative metrics which seeks **Block year data collectively for the last five years i.e. 1 stage percentage/ratio calculation.**
- **Third kind:** Quantitative metrics which seeks the input data based on **options i.e. Multiple choice**
- **Fourth kind:** Quantitative metrics which seeks the input data for **latest completed academic year i.e. 1 Year data**
- **Fifth kind:** Quantitative metrics which automatically calculates the response for the metric using the data provided **in Extended profile.**



Example: Qualitative Metric (Q₁M) and Quantitative Metric (Q_nM)

		Benchmark Values				
		4	3	2	1	0
2.6.1 Q₁M	Programme Outcomes (POs) and Course Outcomes (COs) for all Programmes offered by the institution are stated and displayed on website and attainment of POs and COs are evaluated	PEER TEAM ASSESSMENT				
2.1.2 Q_nM	Percentage of seats filled against seats reserved for various categories (SC, ST, OBC, Divyangjan, etc. as per applicable reservation policy during the last five years	≥AA	AA-BB	BB-CC	DD-CC	<DD
4.1.2 Q_nM	Percentage of expenditure, excluding salary for infrastructure augmentation during last five years (INR in Lakhs)	≥AA	AA--BB	BB-CC	DD-CC	<DD

SYSTEM EVALUATES BASED ON BENCHMARK RANGES



OPTIONAL METRICS

- In this diversified education system of India, there can be few metrics which may not be applicable to the HEIs. Thus in order to facilitate the HEIs, NAAC has come out with this concept of Non Applicable Metrics.
- Thus the provision is made for the HEIs to opt out some of the metrics which may not be applicable to them for various reasons.

The rules for opting out non applicable metrics:

- a) Maximum weightage of metrics that can be opted out shouldn't exceed 30 (up to 3%).
- b) Metrics with maximum of total 10 weightage per criteria can only be opted out.



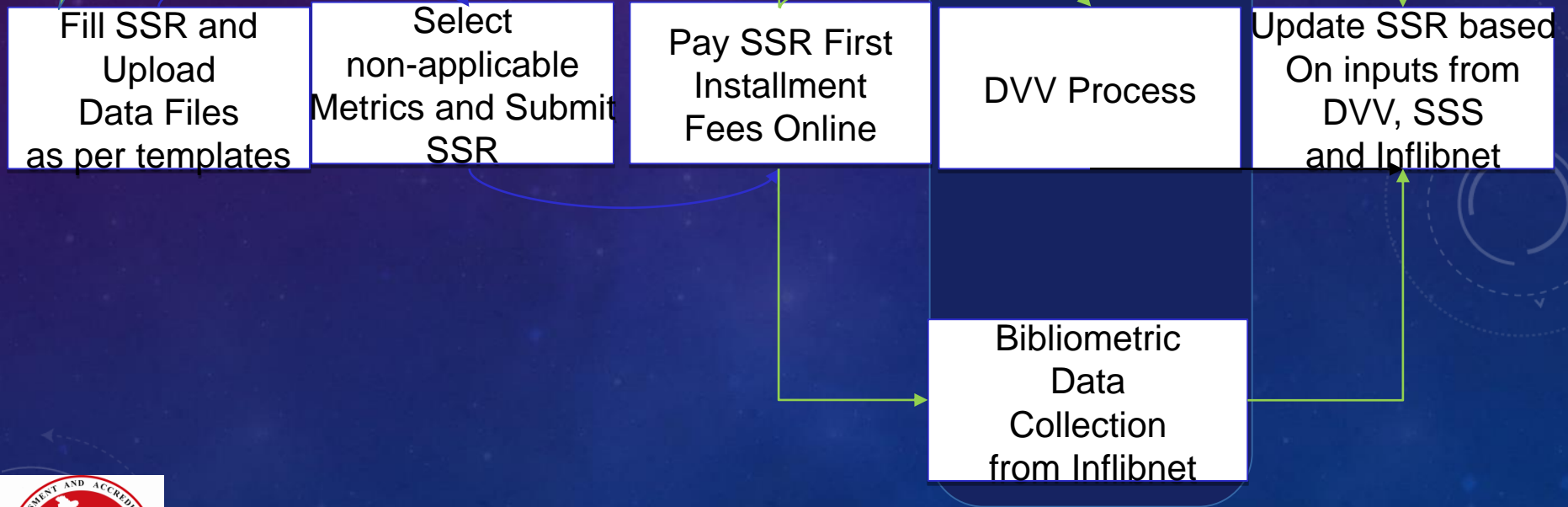
- c) All metrics in Criterion 1, 2, 7 are essential. None of the metrics in this Criterion can be opted out.
- d) Metrics identified as optional can only be opted out.
(List of optional metrics are available in manual)
- e) Qualitative metrics cannot be opted out.
- The optional metrics across 3, 4, 5, 6 criteria have been identified for Autonomous Colleges, and Affiliated/constituent colleges which can only be opted out.
 - The calculation of Cumulative Grade Point Average (CGPA) of Higher Education Institutions (HEIs) will be done excluding the weightage of metrics as opted out by the HEIs.
 - This decision is aimed at helping HEIs, as they will not be assessed on metrics not applicable to them.
 - HEIs willing to opt out the 3% of non applicable metrics need to exercise the same, prior to final submission of SSR to NAAC.



SSR Updation Process

Data capture of SSR, DVV And SSS Data through Metric related questions, Upload supporting data as Per NAAC templates

DVV, SSS, and Inflibnet Data Collection are parallel processes



NAAC Online Solution for Revised Accreditation Framework

Assessor Portal

Public

Help Desk/Support

HEI Portal

DVV Portal

Logistics SP Portal

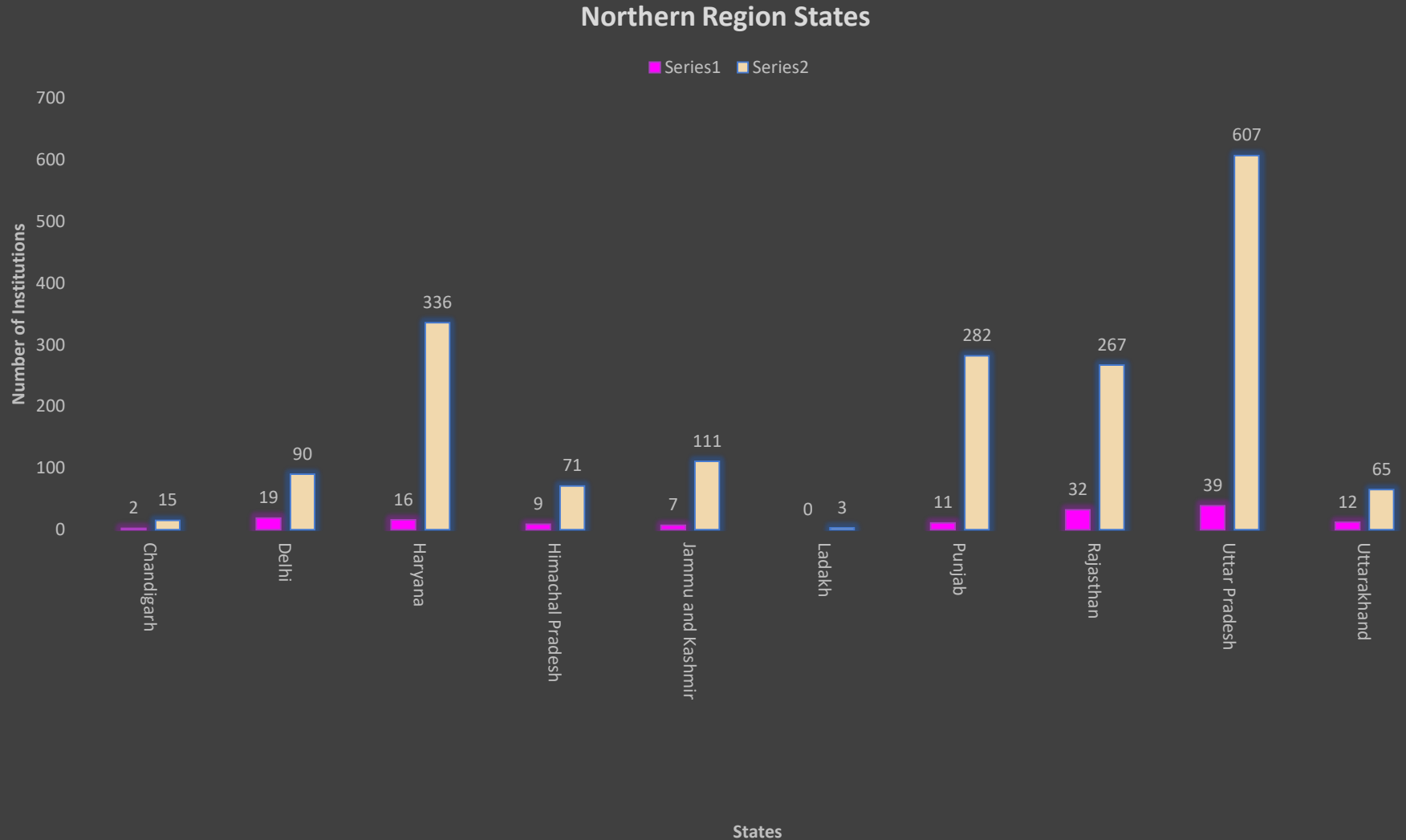
- Registry through Profile creation and updation
- Workflow and Process management through Process Owner
- Report Submission



TOTAL NUMBER OF ACCREDITATIONS (STATUS AS ON 02/11/2022)

Institution Type	First Cycle	Second Cycle	Third Cycle	Fourth Cycle	Number of Accreditations
Universities	415	221	102	26	764
Colleges	8872	3921	1458	168	14419
Total	9287	4142	1560	194	15183

STATE-WISE DISTRIBUTION OF ACCREDITED UNIVERSITY AND COLLEGE(NORTHERN REGION)



STATE-WISE DISTRIBUTION OF ACCREDITED UNIVERSITY AND COLLEGE (AS ON 2ND NOVEMBER 2022)

1	Andaman and Nicobar Islands	South	0	3	3
2	Andhra Pradesh	South	15	385	400
3	Arunachal Pradesh	North East	3	8	11
4	Assam	North East	8	218	226
5	Bihar	East	8	166	174
6	Chandigarh	North	2	15	17
7	Chhattisgarh	East	8	225	233
8	Dadra and Nagar Haveli	West	0	3	3
9	Daman & Diu	West	0	2	2
10	Delhi	North	19	90	109
11	Goa	West	1	25	26
12	Gujarat	West	25	495	520
13	Haryana	North	16	336	352
14	Himachal Pradesh	North	9	71	80
15	Jammu and Kashmir	North	7	111	118
16	Jharkhand	East	7	128	135
17	Karnataka	South	33	893	926
18	Kerala	South	8	307	315

STATE-WISE DISTRIBUTION OF ACCREDITED UNIVERSITY AND COLLEGE(SOUTHERN REGION)

19	Ladakh	North	0	3	3
20	Madhya Pradesh	West	17	332	349
21	Maharashtra	West	35	1859	1894
22	Manipur	North East	1	34	35
23	Meghalaya	North East	2	23	25
24	Mizoram	North East	1	26	27
25	Nagaland	North East	1	34	35
26	Odisha	East	14	292	306
27	Puducherry	South	2	28	30
28	Punjab	North	11	282	293
29	Rajasthan	North	32	267	299
30	Sikkim	North East	2	9	11
31	Tamil Nadu	South	44	839	883
32	Telangana	South	15	266	281
33	Tripura	North East	2	23	25
34	Uttar Pradesh	North	39	607	646
35	Uttarakhand	North	12	65	77
36	West Bengal	East	16	402	418
	All India		415	8872	9287

RECENT DEVELOPMENT

- Different Manuals have been developed to suit the profiles of HEI's
- Revision and fine tuning of manuals to suit the transformations in higher education
- Alignment of processes and guidelines with NEP 2020 recommendations
- Handholding and Mentoring Cell (unaccredited College)
- SSR Mock Test (Preliminary assessment under process)
- FAQ's and IMS is available for query resolution



THANK YOU